

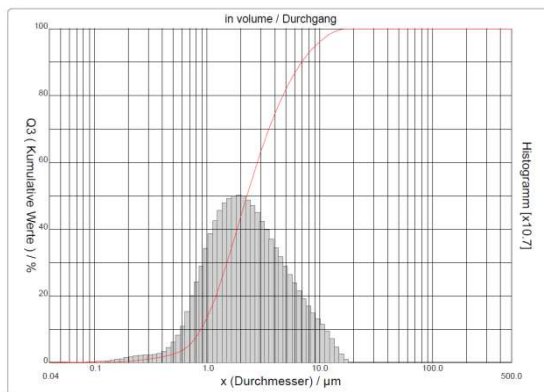
# CASUL® WHITE

> Product Data Sheet:

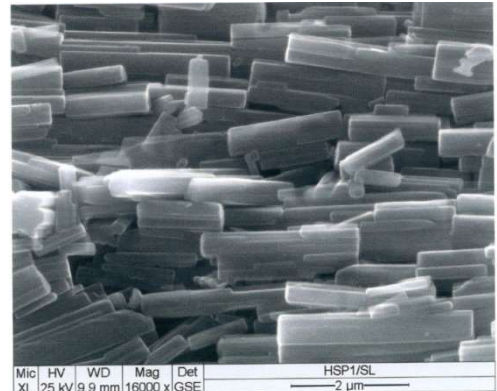
**CASUL® WHITE** is a highly concentrated CASUL® dispersion (slurry) with approx. 62% TS based on calcium aluminate sulfate. It is mainly used as white mineral in the paint industry, construction chemicals and as a flame retardant.

> Chemical composition:	
■ Chemical identification:	Calcium aluminate sulfate
■ Chem. formula:	$3 \text{ CaO} \times \text{Al}_2\text{O}_3 \times 3 \text{ CaSO}_4 \times 32 \text{ H}_2\text{O}$
■ CaO:	approx. 13,5 %
■ Al <sub>2</sub> O <sub>3</sub> :	approx. 8,0 %
■ Fe <sub>2</sub> O <sub>3</sub> :	< 0,1 %
■ Na <sub>2</sub> O:	approx. 0,3%
■ Dry matter:	approx. 61 – 63 % (measured at 40°C)
■ Loss on ignition / Water of hydration:	45 %

> Technical data and properties			
■ Appearance:	white dispersion		
■ Crystal habit:	needle-like		
■ Spec. gravity:	approx. 1,38 g/cm <sup>3</sup> (20°C)		
■ pH value:	approx. 12		
■ Viscosity (Brookfield):	20 – 60 mPas (20°C)		
■ Gloss (Dr.Lange Reflectometer):	60°: approx. 12	85°: approx. 65	
■ Whiteness (R457 with UV):	> 94 %		
■ Lab-values:	L* = 98,0	a* = -0,20	b* = -0,10
■ CIE-Whiteness with UV:	94		
■ Abrasion (AT 1000):	2,6 g/m <sup>2</sup>		
■ Refractive index:	1,49		
■ Isoelectric point (IEP):	pH 9,3		
■ Particle size:	d <sub>10</sub> = approx. 0,8 µm		
	d <sub>50</sub> = approx. 2-2,5 µm		
	d <sub>90</sub> = approx. 6,8 µm		



[Particle size measurement CASUL® WHITE (CILAS 1065; wet)]



[REM-scan CASUL® WHITE (16.000-x magnification)]

## > Applications

- **Paintindustry**

White mineral in high-covering and pollution-free dispersion wall paints
- **Fire protection**

In building materials and colors: Due to the high proportion of water of crystallization (45%) CASUL® increases fire protection in rooms and buildings.
- **Construction chemicals**

Use in the field of building materials and construction systems. Both liquid plasters and dry plasters can be produced on the basis of the binding properties of the white mineral on a purely mineral basis.

**CASUL® WHITE** has a high hiding power (opacity), a high whiteness and is characterized by natural adhesive properties (felting of needle-like crystals). Due to the needle-like shape and the high water content in the crystal matrix of over 45%, light, voluminous lines of high opacity and high whiteness are ensured.

**CASUL® WHITE**

- **CASUL® WHITE PRINT** is safe for contact with food according to ISEGA report (FDA approval)
- Optimal flame retardancy - with a water of crystallization content of 45%.
- Without addition of biocides and preservatives
- Suitable for the production of biocidal and preservative-free products

**Handling / Storage / Application**

**CASUL® WHITE** can be stored in VA- or PE-plastic containers, aluminum or non-ferrous metals are unsuitable. It is preferably delivered in tank trucks and in containers of 1000 liters per each. Prior to use, the slurry must be homogenized by stirring. In storage tanks homogenization is required 2 to 3 times a day (homogenization in IBC 1 to 2 times a month). It should be stored frost-free and protected from direct sunlight.

Es gelten die allgemeinen Geschäftsbedingungen der **REMONDIS** Production GmbH.